



We Build SOLUTIONS

Aerial & Utility Equipment
Custom Metal Fabrication
Field Maintenance & Installation
Truck Bodies & Equipment
Aerial & Utility Equipment
Painting, Repairs, & Service



CHASSIS

2023 Freightliner M2-106
Conventional Cab
GVWR: 33,000 lbs.
CA: 123"
WB: 189"
Engine: B6.7 Cummins Diesel
Transmission: Allison 3500
Color: White
Tire Size: 11R 22.5
Backup Camera and Alarm
50 gal. Fuel Tank
Air Ride Drivers Seat

Aero-Lift 5 Ton Crane

FEATURES

Elevation: -20 to 78 degrees
Non-Continuous Rotation
Side Reach Without Jib: 30'
Side Reach With Jib: 42'
Manual Controls
Full Hydraulic Operation
Dual Controls
Rotzler Winch Mounted on the Heel of the Boom
150' of 19 x 19 x 1/2" Rotation Resistant Wire Rope

Muncie PTO
Danfoss Control Valve at the Pedestal
50 gal. Hydraulic Fluid Tank
7 pin RV Trailer Socket
Hitch Plate with 5 Ton Pintle Hook
Steel Knapheide Heavy Hauler Body
Body Length: 16.25'L x 94.77"W
Bulkhead Height: 40"H x 94"W

STOCK NUMBER #14882

Vin #1FVACXFC9PHUH0870

PRICE FOR SMF: \$149,995

1226 Little Gap Road, Palmerton, PA 18071 • P: 610.824.7000 • F: 610.824.7100 • grocchino@smftruck.com

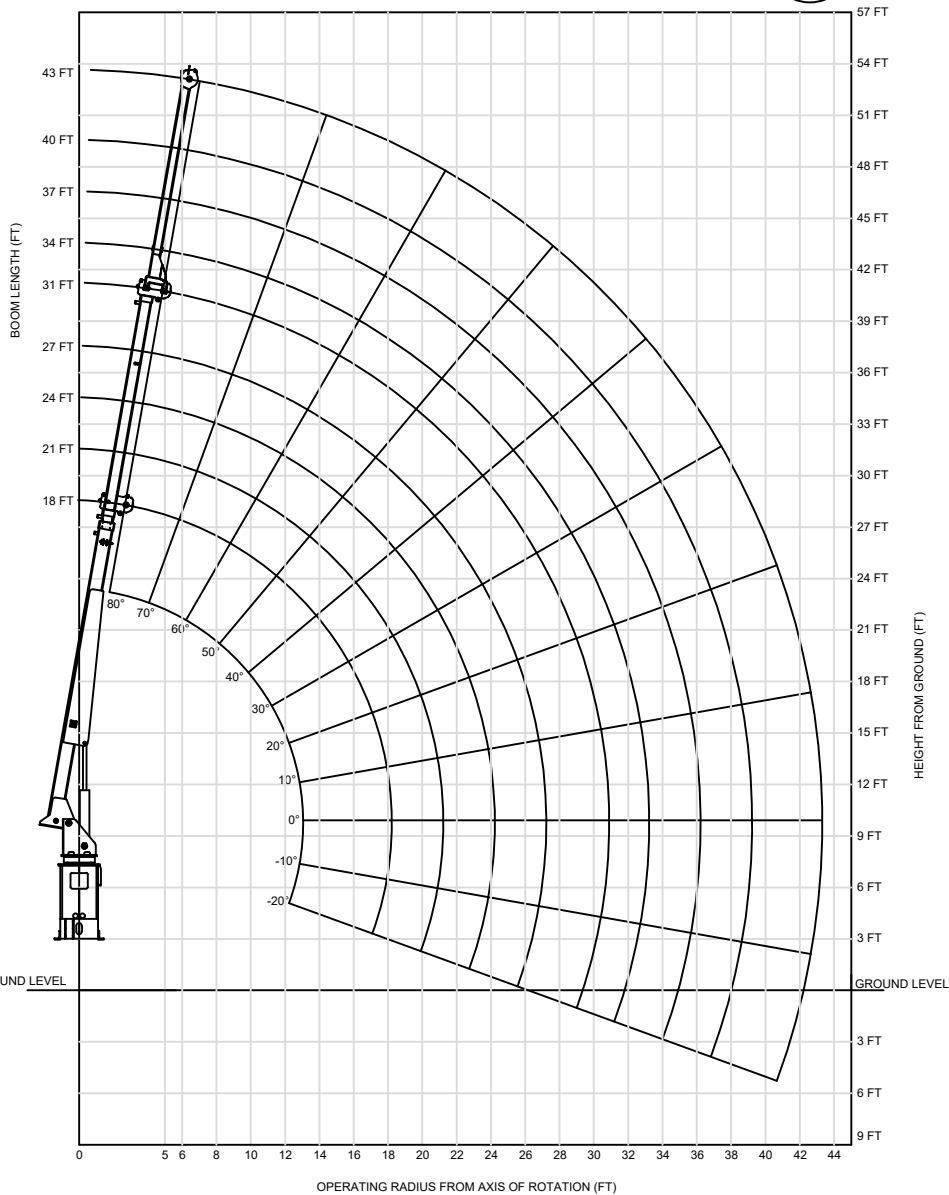
Veteran-Owned

smftruck.com

Made in America 

10402AC

AERO LIFT MANUFACTURED BY



RADIUS (FT)		MAIN BOOM RATED CAPACITIES (LB)							
		BOOM LENGTH (FT)							
5	18	9999	9999	9999	9999	9487	7890	6645	
	20	74	76	77	78	79	80	80	
6	18	9900	9750	9600	9500	9000	7875	6625	6210
	20	71	73	74	76	77	78	80	80
8	18	9000	8800	8500	8250	8000	7000	6500	6150
	20	64	66	69	71	72	73	75	75
10	18	7800	7800	7800	7625	7500	6750	6250	6100
	20	56	60	63	65	67	69	71	71
12	18	6500	6500	6500	6250	6125	6000	5775	5500
	20	48	53	57	60	63	65	66	67
14	18	5500	5500	5500	5250	5250	5250	5000	4800
	20	39	46	50	54	57	60	62	63
16	18	4800	4800	4800	4500	4500	4500	4300	4200
	20	27	37	43	48	52	55	58	59
18	18	4350	4350	4350	4250	4200	4100	3750	3500
	20	0	26	35	41	46	50	53	54
20	18		3850	3850	3750	3625	3600	3400	3250
	20		0	25	34	40	44	48	50
22	18			3425	3375	3375	3300	3000	2800
	20			0	24	32	38	43	44
24	18				3100	3000	2900	2800	2750
	20				0	23	31	37	39
26	18					2800	2600	2500	2500
	20					0	22	30	32
28	18						2475	2300	2200
	20						0	21	25
30	18							2125	2100
	20							0	13
31	18								2000
	20								0

CAPACITIES LISTED WITHOUT JIB. SEE WEIGHT REDUCTION TABLE WHEN USING JIB.

WEIGHT REDUCTIONS FOR LOAD HANDLING DEVICES

12FT FIXED JIB EXTENSION	
*STOWED	196 LBS
*ERECTED	392 LBS

WARNINGS:

- CRANE LOAD RATING ON OUTRIGGERS ARE BASED ON FREELY SUSPENDED LOADS WITH THE MACHINE LEVELED AND STANDING ON A FIRM UNIFORM SUPPORTING SURFACE.
- PRACTICAL WORKING LOADS DEPEND ON SUPPORTING SURFACE, WIND, AND OTHER FACTORS AFFECTING STABILITY, HAZARDOUS SURROUNDINGS, EXPERIENCE OF PERSONNEL, AND PROPER HANDLING, ALL OF WHICH MUST BE TAKEN INTO ACCOUNT BY THE OPERATOR.
- LOADED BOOM ANGLES AT SPECIFIED BOOM LENGTHS GIVE ONLY AN APPROXIMATION OF THE OPERATING RADIUS. THE BOOM ANGLES BEFORE LOADING SHOULD BE GREATER TO ACCOUNT FOR DEFLECTIONS. DO NOT EXCEED THE OPERATING RADIUS FOR RATED LOADS.
- POSITIONING OR OPERATION AT RADII AND BOOM OR JIB LENGTHS BEYOND THE MAXIMUMS AND MINIMUMS SHOWN IS NOT INTENDED OR APPROVED.
- FOR BOOM RATINGS NOT SHOWN, USE RATING ON NEXT LONGER BOOM.
- THE MAXIMUM LOAD THAT MAY BE TELESCOPED IS LIMITED BY HYDRAULIC PRESSURE, BOOM ANGLE AND BOOM LUBRICATION. IT IS SAFE TO ATTEMPT TO TELESCOPE ANY LOAD WITHIN THE LIMITS OF THE LOAD RATING CHART.
- 1/2" FLEX-X 19 PS CABLE, SINGLE POINT WINCH LINE.
MAXIMUM WORKING CAPACITY - 6160#

12FT FIXED JIB RATED CAPACITIES	
BOOM ANGLE	RATED LOAD (LB)
80	5000
70	3422
60	2232
50	1664
40	1349
30	1165
20	1059
10	1008
0	1000

