

HE HYDRAULIC PEDESTAL ELEVATOR



Three-section, fully hydraulic pedestal elevator.
Unique design that helps elevate your bottom line.

AERO-LIFT By **SMF**
STRUCTURAL METAL
FABRICATORS, INC.
We Build Solutions

WWW.SMFTRUCK.COM
1226 Little Gap Rd., Palmerton, PA 18071
(610) 824-7000
ISO 9001:2015
Veteran-Owned
Made in America



THE HYDRAULIC PEDESTAL ELEVATOR

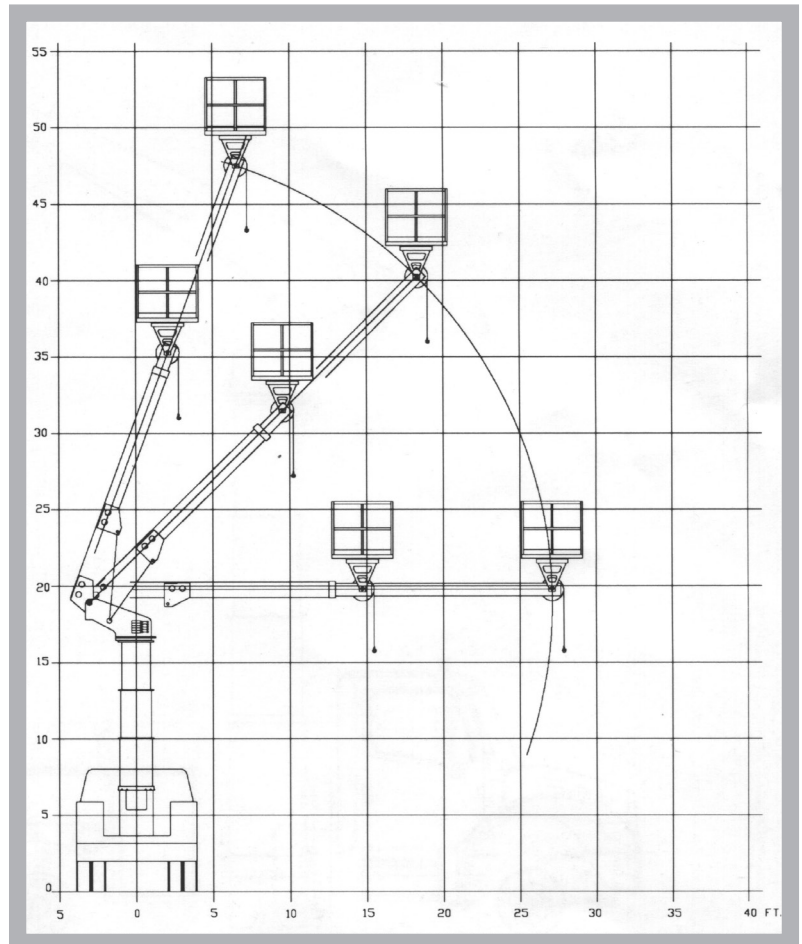
General Specifications:

Hydraulic elevator to lift any one of the Aero-Lift by SMF two- or three-boom telescopic aerial platforms up to 60' working heights.

THIS ELEVATOR GIVES AN ADDITIONAL 10' OF VERTICAL WORKING HEIGHT.

Pedestal elevator is raised by double-acting cylinders. These cylinders have integral holding valves to prevent free fall in the event of hose failure.

Stabilization – torsion bar as well as various outrigger configurations are available, depending upon capacity and size of unit.



AERO-LIFT By



We Build Solutions

For more information, visit us at

WWW.SMFTRUCK.COM

1226 Little Gap Rd., Palmerton, PA 18071

(610) 824-7000

NOTE—All aerial units designed in accordance with ANSI A92.2 specifications

—Specifications are subject to change without notice.

—All photographs and illustrations represented in this literature are for informational purposes only