

40603AC 20 TON CRANE



A fully-hydraulic telescopic crane with two boom extensions, LMI load system, and proportional controls.
Simple design that helps elevate your bottom line.

AERO-LIFT By **SMF**
STRUCTURAL METAL
FABRICATORS, INC.
We Build Solutions

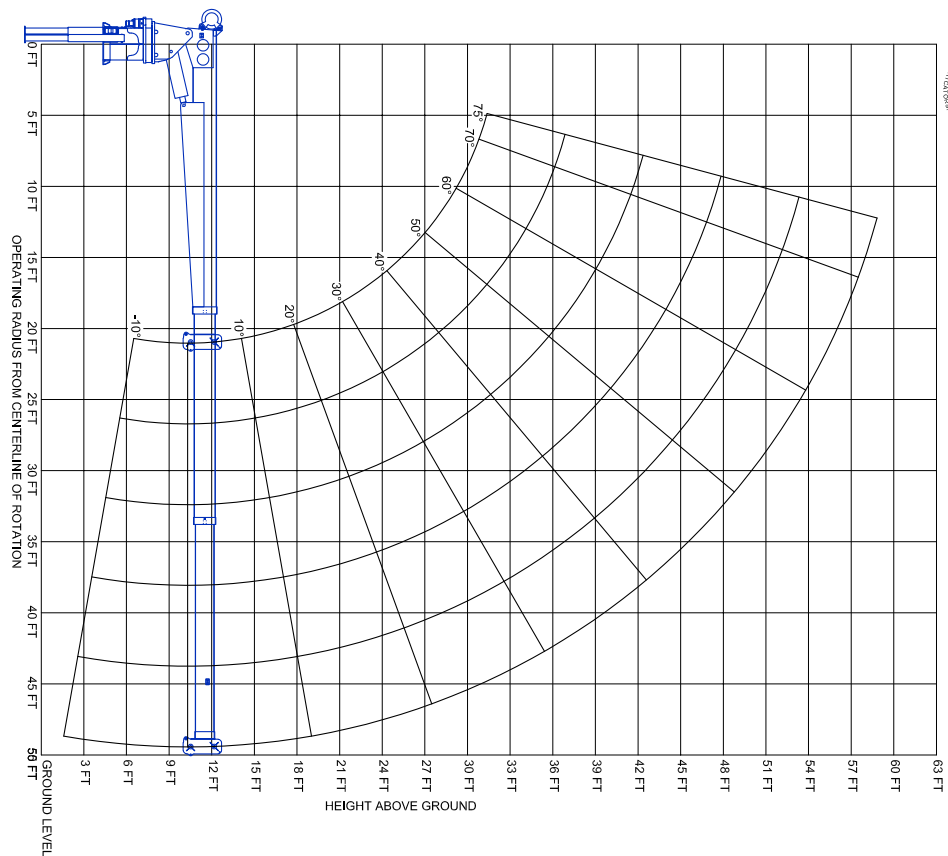
WWW.SMFTRUCK.COM
1226 Little Gap Rd., Palmerton, PA 18071
(610) 824-7000
ISO 9001:2015
Veteran-Owned
Made in America



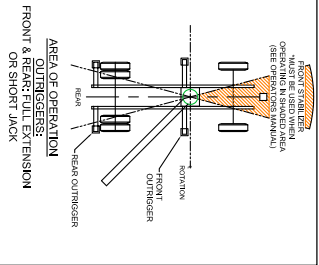
40603AC 20 TON CRANE



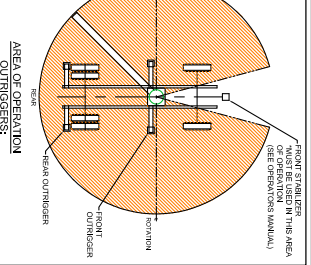
MODEL 40603AC



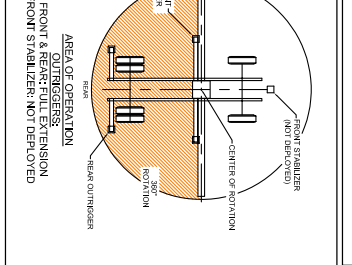
LOADS (FEET)	21 FT	26 FT	36 FT	50 FT
5	16000#	16000#	16000#	16000#
10	16000#	16000#	16000#	16000#
15	16000#	16000#	16000#	16000#
20	16000#	16000#	16000#	16000#
25	16000#	16000#	16000#	16000#
30	16000#	16000#	16000#	16000#
35	16000#	16000#	16000#	16000#
40	16000#	16000#	16000#	16000#
45	16000#	16000#	16000#	16000#
50	16000#	16000#	16000#	16000#



LOADS (FEET)	21 FT	26 FT	36 FT	50 FT
5	16000#	16000#	16000#	16000#
10	16000#	16000#	16000#	16000#
15	16000#	16000#	16000#	16000#
20	16000#	16000#	16000#	16000#
25	16000#	16000#	16000#	16000#
30	16000#	16000#	16000#	16000#
35	16000#	16000#	16000#	16000#
40	16000#	16000#	16000#	16000#
45	16000#	16000#	16000#	16000#
50	16000#	16000#	16000#	16000#



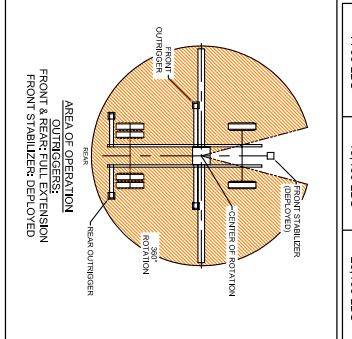
LOADS (FEET)	21 FT	26 FT	36 FT	50 FT
5	16000#	16000#	16000#	16000#
10	16000#	16000#	16000#	16000#
15	16000#	16000#	16000#	16000#
20	16000#	16000#	16000#	16000#
25	16000#	16000#	16000#	16000#
30	16000#	16000#	16000#	16000#
35	16000#	16000#	16000#	16000#
40	16000#	16000#	16000#	16000#
45	16000#	16000#	16000#	16000#
50	16000#	16000#	16000#	16000#



WARNINGS:

- CRANE LOAD RATING ON OUTRIGGERS ARE BASED ON FREELY SUSPENDED LOADS WITH THE MACHINE LEVEL AND STANDING ON A FIRM UNIFORM SURFACE.
- PRACTICAL WORKING LOADS DEPEND ON SUPPORTING SURFACE, WIND, AND OTHER FACTORS AFFECTING STABILITY. HAZARDOUS SURROUNDINGS, EXPERIENCE OF PERSONNEL, AND PROPER HANDLING, ALL OF WHICH MUST BE TAKEN INTO ACCOUNT BY THE OPERATOR.
- LOADED BOOM ANGLES AT SPECIFIED BOOM LENGTHS GIVE ONLY AN APPROXIMATION OF THE OPERATING RADIUS. THE BOOM ANGLES BEFORE LOADS SHOULD BE GREATER TO ACCOUNT FOR DEFLECTIONS. DO NOT EXCEED THE OPERATING RADII FOR RATED LOADS.
- BOOM LENGTHS BEYOND THE MAXIMUMS AND MINIMUMS SHOWN IS NOT INTENDED OR APPROVED.
- FOR BOOM RATINGS NOT SHOWN, USE RATING ON NEXT LONGER BOOM, THAT MAY BE TELESCOPED IS BOOM LUBRICATION. IT IS SAFE TO ATTEMPT TO TELESCOPE ANY LOAD WITHIN THE LIMITS OF THE LOAD RATING CHART.
- 9/16" 19 X 19 FLEX X CABLE, SINGLE POINT LINE WINCH, MAXIMUM WORKING CAPACITY 2-7700# & HYDRAULIC WORKING PRESSURE = 3000#

1 PART LINE	2 PART LINE	3 PART LINE
7700 LBS	15,400 LBS	23,100 LBS



- Options:
- Multiple outrigger configurations
 - Radio controls
 - Continuous rotation
 - Front Jack

NOTE - All aerial units designed in accordance with ASME B30.5 specifications. Specifications are subject to change without notice. All photographs and illustrations represented in this literature are for informational purposes only.