

# 30403 15 TON CRANE



A fully-hydraulic telescopic crane with two boom extensions, LMI load system, and proportional controls.  
**Simple design that helps elevate your bottom line.**

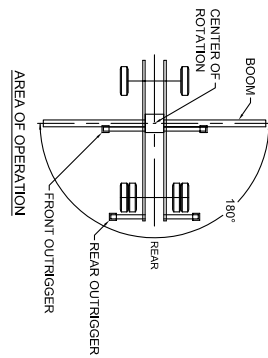
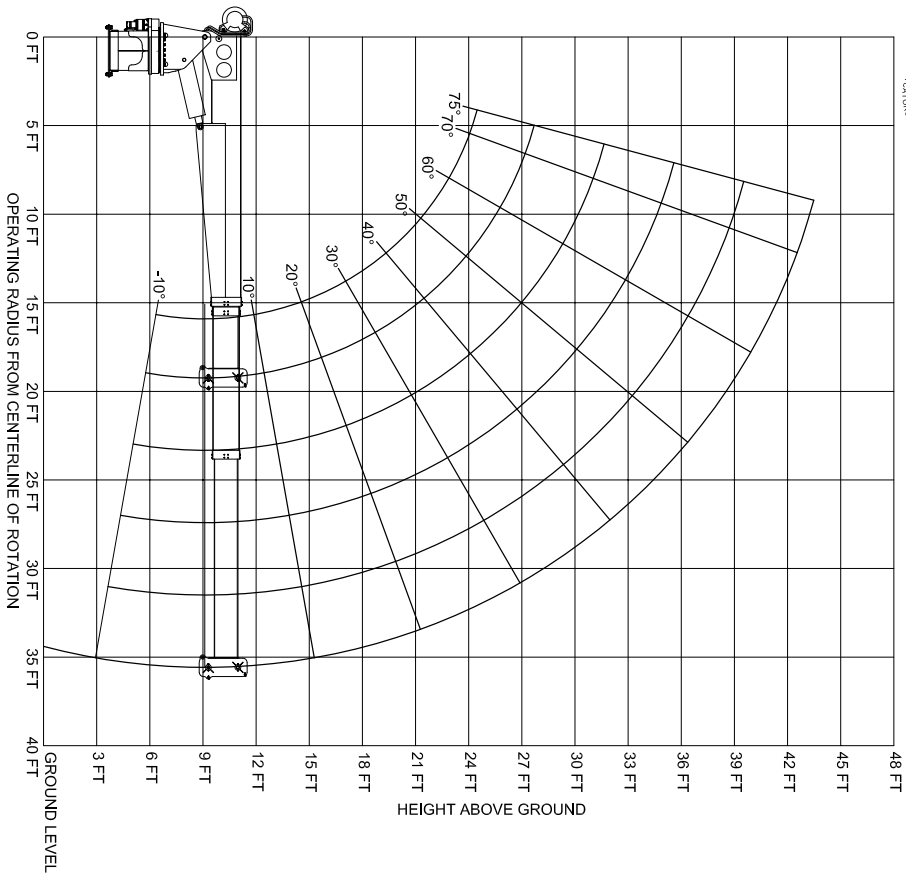
**AERO-LIFT** By **SMF**  
STRUCTURAL METAL  
FABRICATORS, INC.  
**We Build Solutions**

[WWW.SMFTRUCK.COM](http://WWW.SMFTRUCK.COM)  
1226 Little Gap Rd., Palmerton, PA 18071  
(610) 824-7000  
ISO 9001:2015  
Veteran-Owned  
Made in America





### MODEL 30403AC



WORKING LOAD CHART - 30403AC			
LOAD RADIUS (FEET)	20 FT BOOM LENGTH	28 FT BOOM LENGTH	36 FT BOOM LENGTH
5	30000# (73°)		
8	18750# (66°)	18750# (73°)	
10	15000# (57°)	15000# (69°)	15000# (73°)
12	12500# (53°)	12500# (64°)	12500# (70°)
14	10714# (45°)	10714# (60°)	10714# (67°)
16	9375# (37°)	9375# (55°)	9375# (63°)
18	8333# (26°)	8333# (50°)	8333# (60°)
20	7500# (0°)	7500# (44°)	7500# (57°)
22		6818# (38°)	6818# (52°)
25		6000# (26°)	6000# (45°)
28		5357# (0°)	5357# (38°)
30			5000# (36°)
35			4285# (0°)

- WARNINGS:**
- CRANE LOAD RATING ON OUTRIGGERS ARE BASED ON FREELY SUSPENDED LOADS WITH THE MACHINE LEVELLED AND STANDING ON A FIRM UNIFORM SUPPORTING SURFACE.
  - PRACTICAL WORKING LOADS DEPEND ON SUPPORTING SURFACE, WIND AND OTHER FACTORS AFFECTING STABILITY, HAZARDOUS SURROUNDINGS, EXPERIENCE OF PERSONNEL, AND PROPER HANDLING. ALL OF WHICH MUST BE TAKEN INTO ACCOUNT BY THE OPERATOR.
  - LOADED BOOM ANGLES AT SPECIFIED BOOM LENGTHS GIVE ONLY AN APPROXIMATION OF THE OPERATING RADIUS. THE BOOM ANGLES BEFORE LOADING SHOULD BE GREATER TO ACCOUNT FOR DEFLECTIONS. DO NOT EXCEED THE OPERATING RADIUS FOR RATED LOADS.
  - POSITIONING OR OPERATION AT RADI AND BOOM OR JIB LENGTHS BEYOND THE MAXIMUMS AND MINIMUMS SHOWN IS NOT INTENDED OR APPROVED.
  - FOR BOOM RATINGS NOT SHOWN, USE RATING ON NEXT LONGER BOOM.
  - THE MAXIMUM LOAD THAT MAY BE TELESCOPED IS LIMITED BY HYDRAULIC PRESSURE, BOOM ANGLE AND BOOM LUBRICATION. IT IS SAFE TO ATTEMPT TO TELESCOPE ANY LOAD WITHIN THE LIMITS OF THE LOAD RATING CHART.
  - 9/16" 19 X 19 FLEX X CABLE, SINGLE POINT LINE WINCH, MAXIMUM WORKING CAPACITY - 7760#
  - HYDRAULIC WORKING PRESSURE - 3000#

1 PART LINE	2 PART LINE	3 PART LINE
7700 LBS	15,400 LBS	23,100 LBS

- Options:
- Multiple outrigger configurations
  - Radio controls
  - Continuous rotation
  - Front jack

# 30403 15 TON CRANE



WWW.SMFTRUCK.COM  
 1226 Little Gap Rd., Palmerton, PA 18071  
 (610) 824-7000