

20422AC 10 TON CRANE

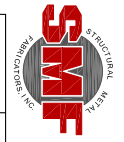


A fully hydraulic crane with one boom extension, insulated or non-insulated boom, LMI load system, and proportional controls.
Simple design to elevate your bottom line.

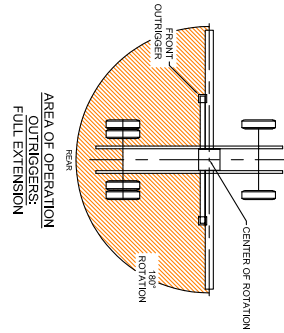
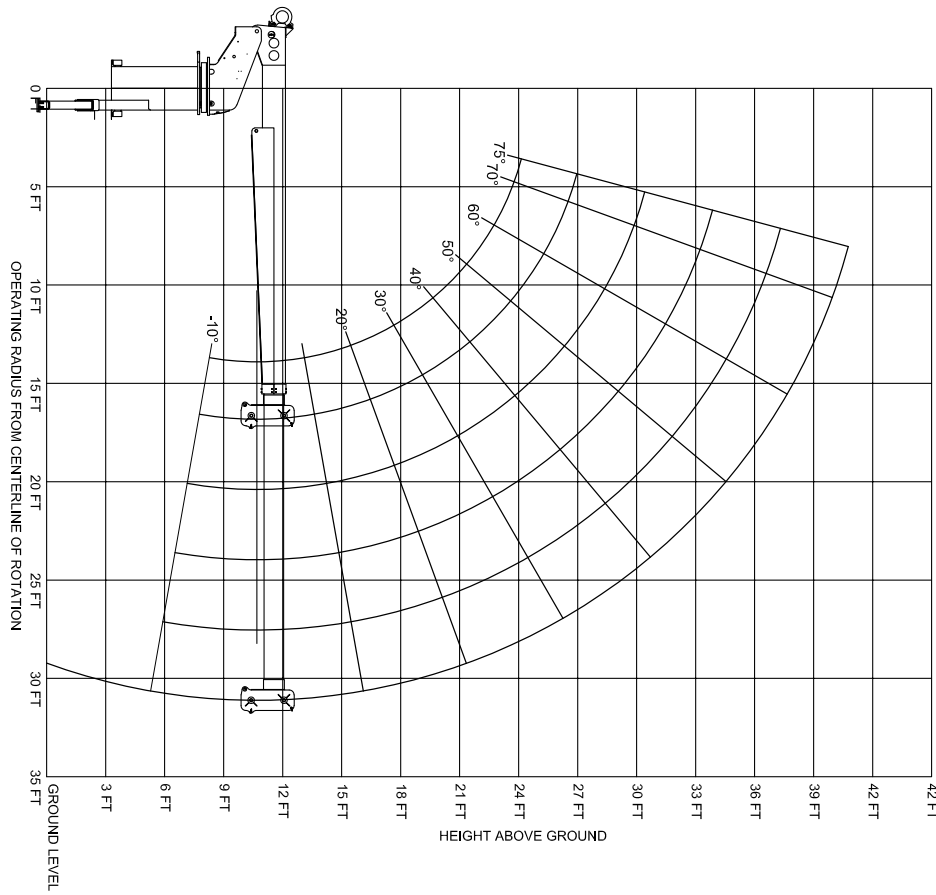
AERO-LIFT By **SMF**
STRUCTURAL METAL
FABRICATORS, INC.
We Build Solutions

WWW.SMFTRUCK.COM
1226 Little Gap Rd., Palmerton, PA 18071
(610) 824-7000
ISO 9001:2015
Veteran-Owned
Made in America





MODEL 20422AC



LOAD RADIUS (FEET)	19 FT BOOM LENGTH (74°)	32 FT BOOM LENGTH (72°)
5	20000# (74°)	
10	10000# (88°)	10000# (72°)
15	6666# (38°)	6666# (62°)
20	5000# (63°)	5000# (61°)
25		4000# (38°)
30		3333# (20°)
32		3125# (0°)

LOAD RATING BASED UPON A MINIMUM CHASSIS CAPACITY & WEIGHT

- WARNINGS:**
1. CRANE LOAD RATING ON OUTRIGGERS ARE BASED ON FREELY SUSPENDED LOADS WITH THE MACHINE LEVELLED AND STANDING ON A FIRM UNIFORM SUPPORTING SURFACE.
 2. PRACTICAL WORKING LOADS DEPEND ON SUPPORTING SURFACE, WIND, AND OTHER FACTORS AFFECTING STABILITY, HAZARDOUS SURROUNDINGS, EXPERIENCE OF PERSONNEL, AND PROPER HANDLING, ALL OF WHICH MUST BE TAKEN INTO ACCOUNT BY THE OPERATOR.
 3. LOADED BOOM ANGLES AT SPECIFIED BOOM LENGTHS GIVE ONLY AN APPROXIMATION OF THE OPERATING RADIUS. THE BOOM ANGLES BEFORE LOADING SHOULD BE GREATER TO ACCOUNT FOR DEFLECTIONS, DO NOT EXCEED THE OPERATING RADIUS FOR RATED LOADS.
 4. POSITIONING OR OPERATION AT RADI AND BOOM OR JIB LENGTHS BEYOND THE MAXIMUMS AND MINIMUMS SHOWN IS NOT INTENDED OR APPROVED.
 5. FOR BOOM RATINGS NOT SHOWN, USE RATING ON NEXT LONGER BOOM.
 6. THE MAXIMUM LOAD THAT MAY BE TELESCOPED IS LIMITED BY HYDRAULIC PRESSURE. BOOM ANGLE AND BOOM LUBRICATION. IT IS SAFE TO ATTEMPT TO TELESCOPE ANY LOAD WITHIN THE LIMITS OF THE LOAD RATING CHART.
 7. 1/2" 19 x 19 FLEX X CABLE, SINGLE POINT LINE WINCH, MAXIMUM WORKING CAPACITY - 5800#
 8. HYDRAULIC WORKING PRESSURE - 3000#

1 PART LINE	2 PART LINE	3 PART LINE
5800 LBS	11,600 LBS	17,400 LBS

- Options:
- Multiple outrigger configurations
 - Radio controls
 - Continuous rotation
 - Front jack

20422AC 10 TON CRANE



WWW.SMFTRUCK.COM
 1226 Little Gap Rd., Palmerton, PA 18071
 (610) 824-7000